

Getting Here Is Easy!

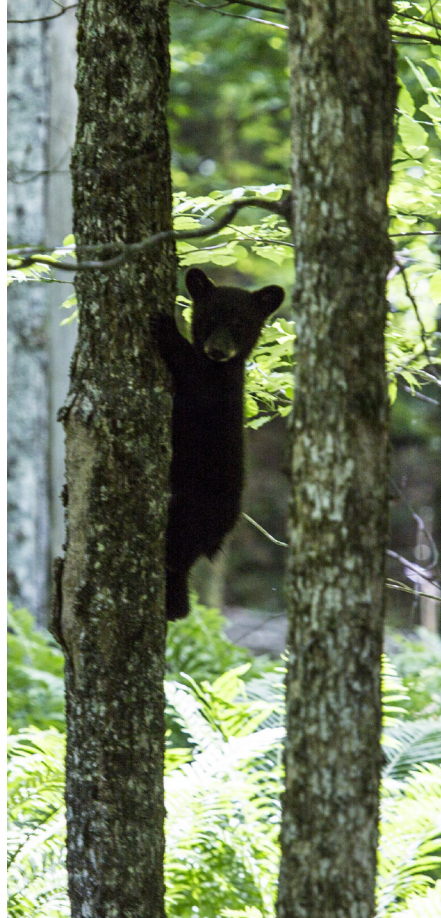
Lake Placid: Closer Than You Think

Yes, Lake Placid is located in the mountains of Northern New York, but that doesn't mean we play hard to get to. In fact, we're less than a five-hour drive from most major northeastern metropolitan areas, including New York City and Boston. That puts us less than four hours from Ottawa, Canada and Syracuse, NY; and about two hours from Albany, NY; Burlington, VT; and Montreal, Canada.

By Air: Lake Placid is approximately a two-hour drive from the international airports in Albany, NY; Burlington, VT; and Montreal, Canada. There are also airports in Saranac Lake, Lake Placid, and Plattsburgh.

By Train or Bus: Railway access via Amtrak is available from New York City, Albany, and Montreal, with tickets that include a shuttle ride to Lake Placid directly from the Westport Station. Adirondack Trailways also offers service from Port Authority Bus Terminal and other terminals north of New York City, with drop off in the center of Lake Placid and Saranac Lake.

By Car: Take a short drive and find the perfect retreat! You'll enjoy beautiful landscapes, well-maintained roads, and plenty of amenities as you travel through the Adirondacks.



Driving to Lake Placid

Burlington, VT: 62 miles/2 hours
Montreal, Canada: 112 miles/2.5 hours
Albany, NY: 140 miles/2.5 hours
Ottawa, Canada: 147 miles/3.5 hours
Syracuse, NY: 195 miles/4 hours
Hartford, CT: 250 miles/4.5 hours
Rochester, NY: 259 miles/4.5 hours
New York City: 288 miles/5 hours
Boston, MA: 306 miles/5 hours
Toronto, Canada: 330 miles/6 hours
Buffalo, NY: 337 miles/6 hours
Pittsburgh, PA: 548 miles/10 hours



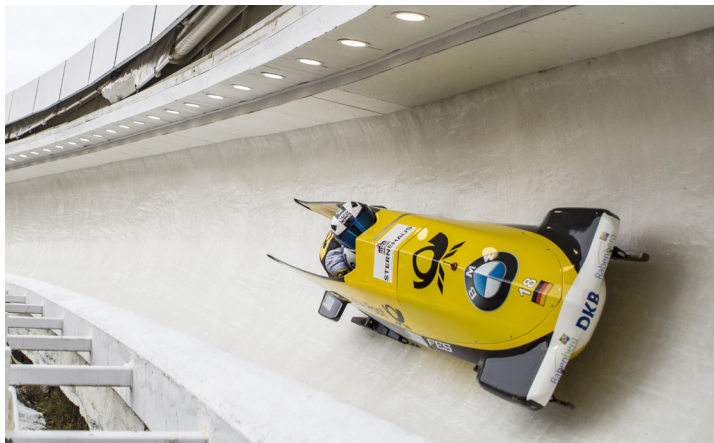
Signature Events

Through the Lake Placid Conference Center and Visitors Bureau, planners will have access to spaces that are a real departure from the same old boardroom. Get your team fired up with high spirited, motivational activities that utilize many of our Olympic venues.

However you choose to build your unique experience in Lake Placid, you and your attendees will leave feeling refreshed, relaxed, and enlightened with all of the knowledge gained throughout the conference.

"If natural beauty and serenity sound inviting, if having an extended staff appeals to you, and if an unforgettable experience for your members is your goal, start with the Lake Placid Conference Center and Visitors Bureau for your next event."

~Heidi S. Longton, CMP, CMM | Meeting & Event Manager | New York State School Boards Association | Past President, Meeting Professionals International Northeastern New York Chapter 2016



Offer a unique recreational experience to event attendees including the excitement of a ride down the bobsled track!



Imagine a reception with a world-class view!

Go a little further, get a lot more.



CONFERENCE CENTER *at*
LAKE PLACID



lakeplacid.com/meetings
2608 Main Street, Lake Placid, NY 12946
518-523-2445

LAKE PLACID
adirondacks, usa

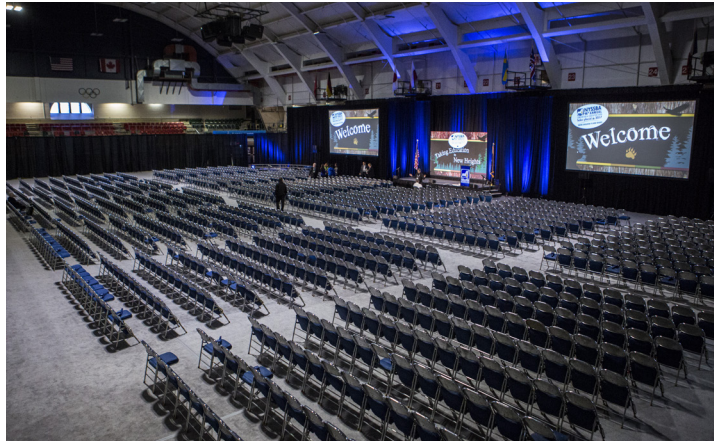
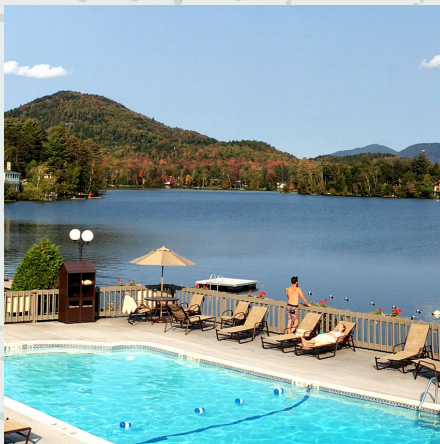
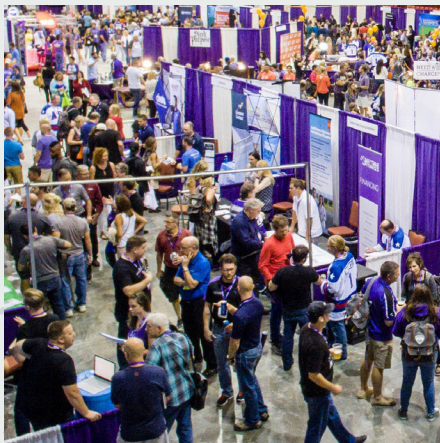
World-Class Host

Nestled in the Adirondack High Peaks, Lake Placid offers a top-notch array of world-class resorts and conference facilities in a landscape that's nothing short of breathtaking. The Lake Placid Conference Center and Visitors Bureau has a richly experienced and highly motivated meetings team. From the first phone call to hotel checkout, you can rely on the CVB for personalized service, consistent reliability, and great attention to detail.

“Over the past five years, we have formed a very strong and special relationship, one where we consider all of you as partners and integral members of our team. No matter where STC has been or where we may consider going, we have never experienced, nor do we ever feel, this level of consistency, support, partnership, or warm welcome.”
~Dan Sidebottom, SUNY Technology Conference

Fast Facts

- Up to 90,000 square feet of flexible meeting space, including two 20,000-square-foot, column-free exhibit areas.
- Complimentary, state-of-the-art, in-room A/V equipment.
- Capability of supplying 5MB of bandwidth to over 800 devices simultaneously. Additional bandwidth is available.
- Gold LEED certified building.
- 12 breakout rooms.
- Full service production kitchen.
- Central reservations system.
- Complimentary transportation between the conference center and lodging properties.
- No food and beverage minimum.
- Walk to Main Street and lodging properties.
- Over 1,800 hotel rooms within 1/4 mile of the conference center.



LEVEL	ROOM	SQ. FEET	RECEPTION	THEATER	CLASSRM	BANQUET	BOOTHS
1A	North Elba	826	80	80	50	48	5
2A	Lussi Ballroom A	1,177	125	110	84	80	7
2B	Lussi Ballroom B	1,164	125	110	84	80	7
2C	Lussi Ballroom C	1,178	125	110	84	80	7
2D	Lussi Ballroom D	5,433	500	600	350	400	34
2	Lussi Salons A & B	2,341	250	225	168	160	14
2	Lussi Salons A, B & C	3,519	375	350	240	225	21
2E	Entire Lussi Ballroom	9,009	900	1000	625	600	60
2F	Legacy	898	95	90	60	48	6
2G	Edelweiss	3,560	300	250	128	293	18
2H	Excelsior	1,050	110	110	68	64	7
2	Edelweiss & Excelsior	4,610	450	400	248	250	25
2I	Hall of Fame	2,745	200	N/A	N/A	N/A	12
2J	1932 Jack Shea Arena	20,000	2,000	2,000*	1,400	1,200	130
2K	1980 Herb Brooks Arena	20,000	2,105	2,000*	1,400	1,200	130
2L	1980 Mezzanine	7,800	600	N/A	N/A	300	30
2M	USA Rink	17,000	1,789	1,680	1,170	900	105
3A	State Room	730	n/a	n/a	n/a	20	n/a
3B	Van Hoevenberg	1,029	120	110	70	72	6
3C	Intervale	925	95	90	56	48	6
3D	Whiteface	878	95	90	56	48	5
3E	Gore	807	90	76	48	48	5
3F	Lookout Gallery	1,695	150	n/a	n/a	100	10

*With arena seating. Capacities are based on MPI guidelines.

